

17061 **AIRPORT DIAGRAM** HARTSFIELD - JACKSON ATLANTA INTL (ATL) ATLANTA, GEORGIA

AL-26 (FAA)

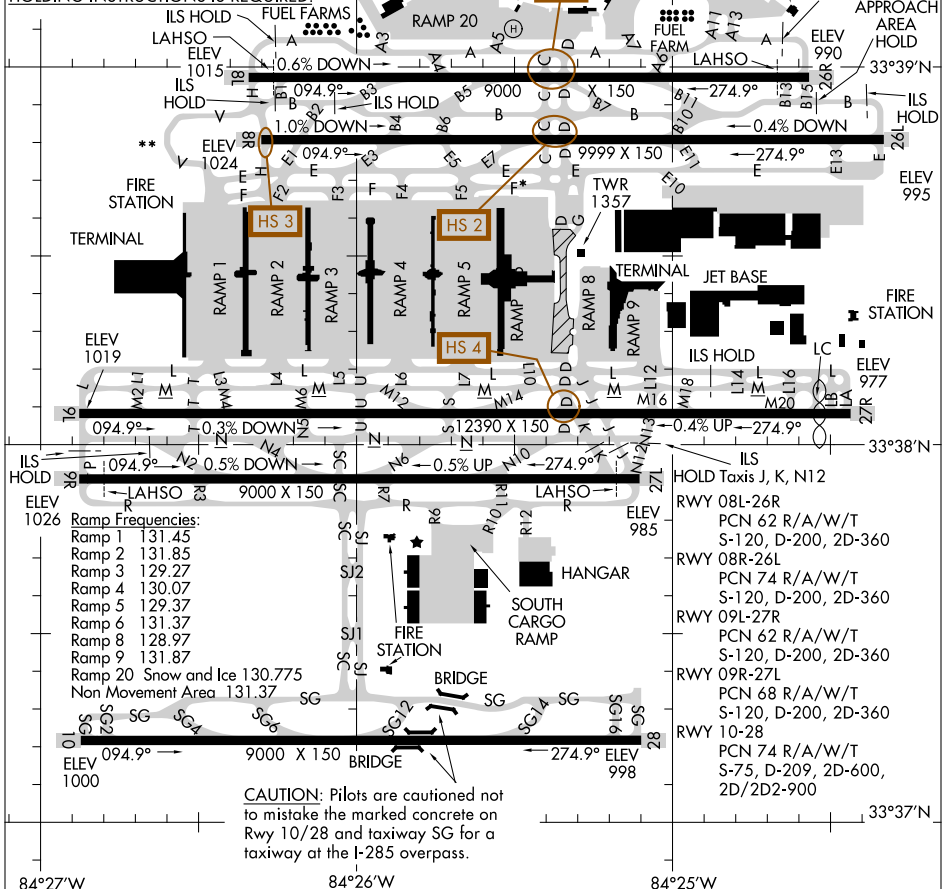
ATLANTA, GEORGIA

ATIS ARR 119.65
 DEP 125.55
 ATLANTA TOWER
 119.1 254.4 (RWY 08L-26R)
 125.325 254.4 (RWY 08R-26L)
 119.3 254.4 (RWY 09R-27L)
 123.85 254.4 (RWY 09L-27R)
 119.5 254.4 (RWY 10-28)
 GND CON
 121.9 254.4 (RWY 08L-26R, 08R-26L)
 121.75 254.4 (RWY 09L-27R, 09R-27L)
 121.65 254.4 (RWY 10-28)
 CLINC DEL
 118.1
 CPDLC

*Group VI aircraft are restricted from using Taxiway Foxtrot east of Ramp 5 North to the west side of Taxiway Charlie.
 **Aircraft with wingspan greater than 171' are restricted from using Taxiway Victor.

FIELD ELEV 1026

D
 LANDING AIRCRAFT CAN EXPECT TO REMAIN ON TOWER FREQUENCY UNTIL SPECIFICALLY INSTRUCTED TO CONTACT GROUND CONTROL.
 CAUTION: BE ALERT TO RUNWAY CROSSING CLEARANCES.
 READBACK OF ALL RUNWAY HOLDING INSTRUCTIONS IS REQUIRED.



SE-4, 02 MAR 2017 to 30 MAR 2017

SE-4, 02 MAR 2017 to 30 MAR 2017

Ramp Frequencies:
 Ramp 1 131.45
 Ramp 2 131.85
 Ramp 3 129.27
 Ramp 4 130.07
 Ramp 5 129.37
 Ramp 6 131.37
 Ramp 8 128.97
 Ramp 9 131.87
 Ramp 20 Snow and Ice 130.775
 Non Movement Area 131.37

ILS HOLD Taxis J, K, N12
 RWY 08L-26R
 PCN 62 R/A/W/T
 S-120, D-200, 2D-360
 RWY 08R-26L
 PCN 74 R/A/W/T
 S-120, D-200, 2D-360
 RWY 09L-27R
 PCN 62 R/A/W/T
 S-120, D-200, 2D-360
 RWY 09R-27L
 PCN 68 R/A/W/T
 S-120, D-200, 2D-360
 RWY 10-28
 PCN 74 R/A/W/T
 S-75, D-209, 2D-600, 2D/2D2-900

CAUTION: Pilots are cautioned not to mistake the marked concrete on Rwy 10/28 and taxiway SG for a taxiway at the I-285 overpass.

AIRPORT DIAGRAM ATLANTA, GEORGIA HARTSFIELD - JACKSON ATLANTA INTL (ATL)

17061