

# AIRPORT DIAGRAM

AFD-5031 [USA]

FORT HOOD (KILLEEN), TEXAS

FT. HOOD TOWER ★  
 119.65 269.45  
 GND CON  
 133.85 225.4  
 CLNC DEL  
 225.4

MARCH 2017  
 ANNUAL RATE OF CHANGE  
 0.1° W

980  
 ☆

VAR. 3.9° E

FIELD  
 ELEV  
 924

CONTROL  
 TOWER  
 979

(H)

J

31°08'30"N

WEST RAMP

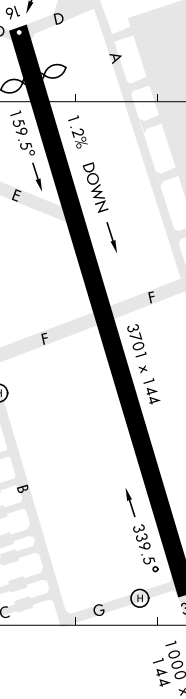
NORTH  
 RAMP

BASE  
 OPS

FIRE  
 STATION

CENTER RAMP

SOUTH RAMP



SC-3, 02 MAR 2017 to 30 MAR 2017

SC-3, 02 MAR 2017 to 30 MAR 2017

31°08'N

Rwy 16-34  
 PCN 11 F/B/W/T

Rwy 16 Idg 3134'

97°43'W

97°42'30"W

# AIRPORT DIAGRAM

FORT HOOD (KILLEEN), TEXAS

HOOD AAF (KHLR)