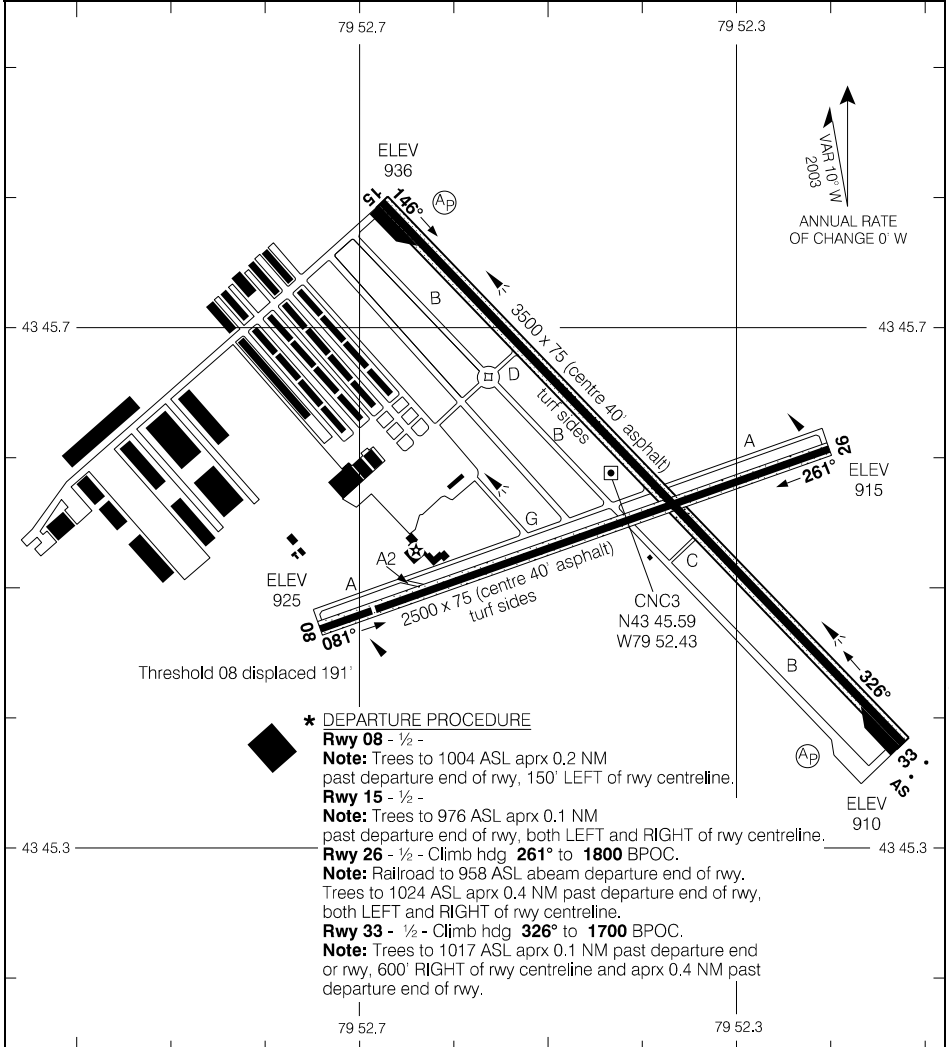


AERODROME CHART

					UNICOM – 123.3	TML Toronto – 119.3
					ATF*	
	08	26	15	33		
TORA	2500	2500	3500	3500		
TODA	2500	2500	3500	3500		
ASDA	2500	2500	3500	3500		
LDA	2309	2500	3500	3500		



- \* DEPARTURE PROCEDURE**
- Rwy 08 - 1/2 -**  
**Note:** Trees to 1004 ASL aprx 0.2 NM past departure end of rwy, 150' LEFT of rwy centreline.
  - Rwy 15 - 1/2 -**  
**Note:** Trees to 976 ASL aprx 0.1 NM past departure end of rwy, both LEFT and RIGHT of rwy centreline.
  - Rwy 26 - 1/2 -** Climb hdg **261°** to **1800** BPOC.  
**Note:** Railroad to 958 ASL abeam departure end of rwy. Trees to 1024 ASL aprx 0.4 NM past departure end of rwy, both LEFT and RIGHT of rwy centreline.
  - Rwy 33 - 1/2 -** Climb hdg **326°** to **1700** BPOC.  
**Note:** Trees to 1017 ASL aprx 0.1 NM past departure end of rwy, 600' RIGHT of rwy centreline and aprx 0.4 NM past departure end of rwy.

TAKE-OFF MINIMA

Rwys 08, 15, 26, 33: \*

SCALE IN FEET

500 0 500

Source of Canadian Civil Aeronautical Data: © 2019 NAV CANADA All rights reserved