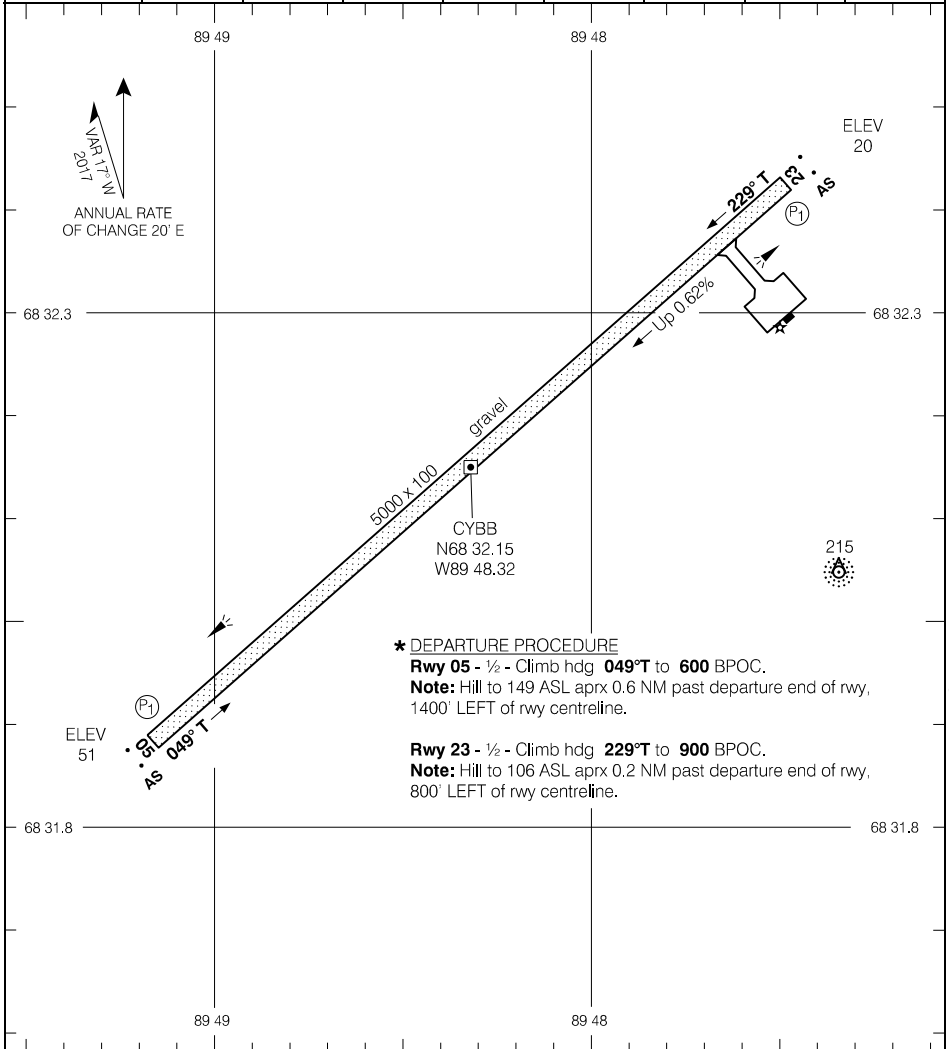


AERODROME CHART

				APRT RADIO - 122.1 TFC - 122.1		MF	
DECL	DISTS	05	23				
TORA		5000	5000				
TODA		5295	5459				
ASDA		5000	5000				
LDA		5000	5000				



**\* DEPARTURE PROCEDURE**  
**Rwy 05** - ½ - Climb hdg **049°T** to **600** BPOC.  
**Note:** Hill to 149 ASL aprx 0.6 NM past departure end of rwy, 1400' LEFT of rwy centreline.  
**Rwy 23** - ½ - Climb hdg **229°T** to **900** BPOC.  
**Note:** Hill to 106 ASL aprx 0.2 NM past departure end of rwy, 800' LEFT of rwy centreline.

TAKE-OFF MINIMA

Rwys 05; 23: \*

SCALE IN FEET

1000 500 0 1000

Source of Canadian Civil Aeronautical Data: © 2019 NAV CANADA All rights reserved