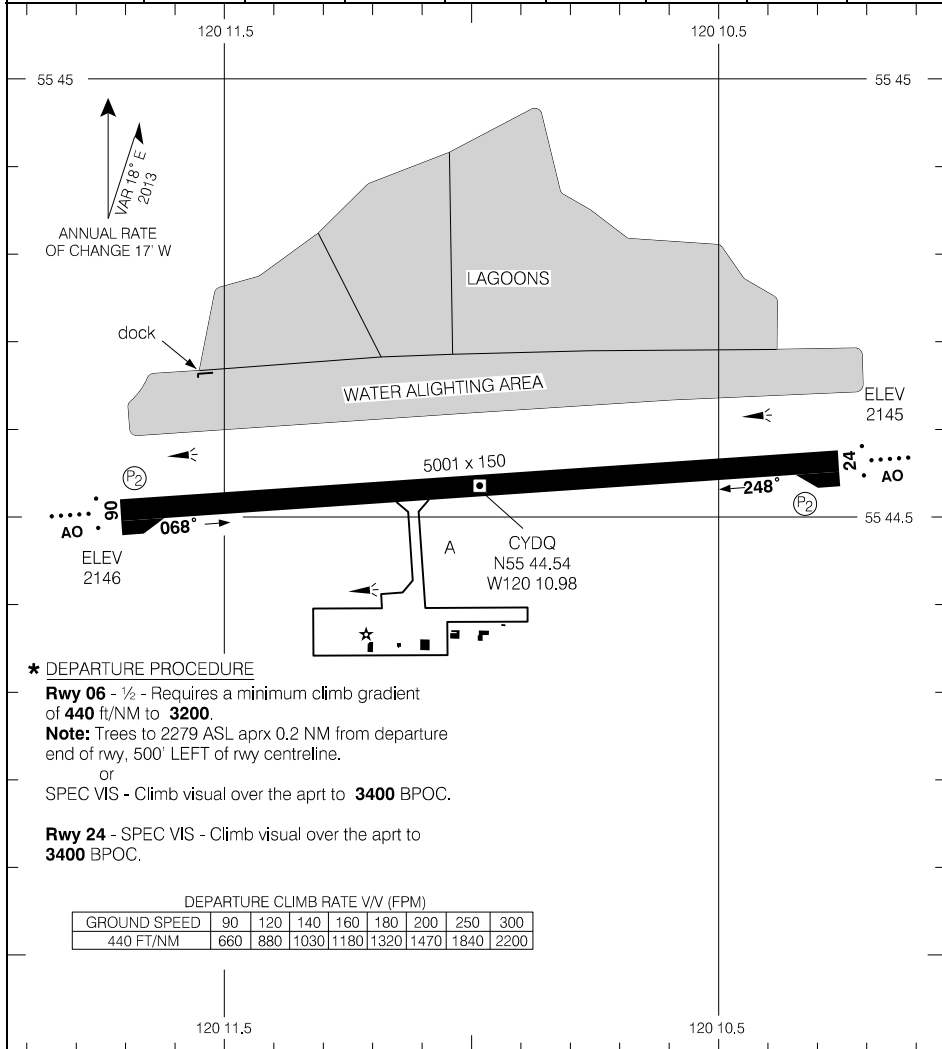


AERODROME CHART

AWOS - 128.55				● RADIO Peace River - 122.2 ● TFC - 122.2		● RADIO Peace River - 122.2 MF	
DECL DIST	06	24					
TORA	5001	5001					
TODA	5985	5785					
ASDA	5001	5001					
LDA	5001	5001					



Source of Canadian Civil Aeronautical Data: © 2019 NAV CANADA All rights reserved

★ DEPARTURE PROCEDURE

**Rwy 06** - ½ - Requires a minimum climb gradient of **440 ft/NM** to **3200**.  
**Note:** Trees to 2279 ASL aprx 0.2 NM from departure end of rwy, 500' LEFT of rwy centreline.  
 or  
 SPEC VIS - Climb visual over the aprt to **3400** BPOC.

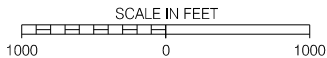
**Rwy 24** - SPEC VIS - Climb visual over the aprt to **3400** BPOC.

DEPARTURE CLIMB RATE VV (FPM)

GROUND SPEED	90	120	140	160	180	200	250	300
440 FT/NM	660	880	1030	1180	1320	1470	1840	2200

TAKE-OFF MINIMA

Rwys 06; 24: ★



AERODROME CHART

EFF 5 JAN 17

CYDQ