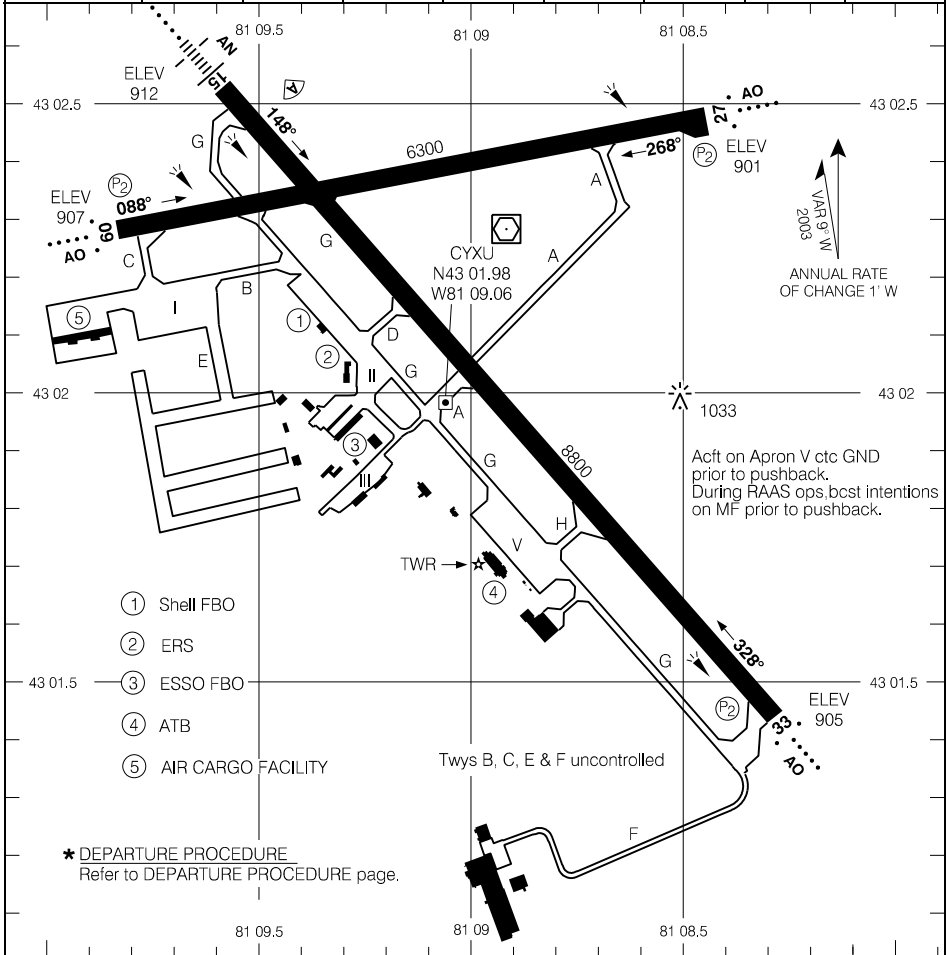


AERODROME CHART

| | | | |
|----------------|---------------|-------------------------|-----------------------|
| ● ATIS - 127.8 | ● GND - 121.9 | ● TWR - 119.4 125.65 | ● CTR Toronto - 135.3 |
| ● LWIS - 127.8 | | ● RADIO Sudbury - 119.4 | |
| | | | ● MF* |

| DECL DIST | 09 | 27 | 15 | 33 |
|-----------|------|------|------|------|
| TORA | 6300 | 6300 | 8800 | 8800 |
| TODA | 7284 | 7284 | 9784 | 9625 |
| ASDA | 6300 | 6300 | 8800 | 8800 |
| LDA | 6300 | 6300 | 8800 | 8800 |



Source of Canadian Civil Aeronautical Data: © 2019 NAV CANADA All rights reserved

| | |
|--------------------------------------|----------------|
| RUNWAY LEVEL OF SERVICE | |
| RVO | LVO |
| RWY 15: RVR 1200 RWY 33: (1/2 sm) | NOT AUTHORIZED |
| TAKE-OFF MINIMA | |
| All Rwy's: * | |
| SCALE IN FEET | |
| 2000 0 2000 | |

AERODROME CHART

EFF 3 JAN 19

CYXU