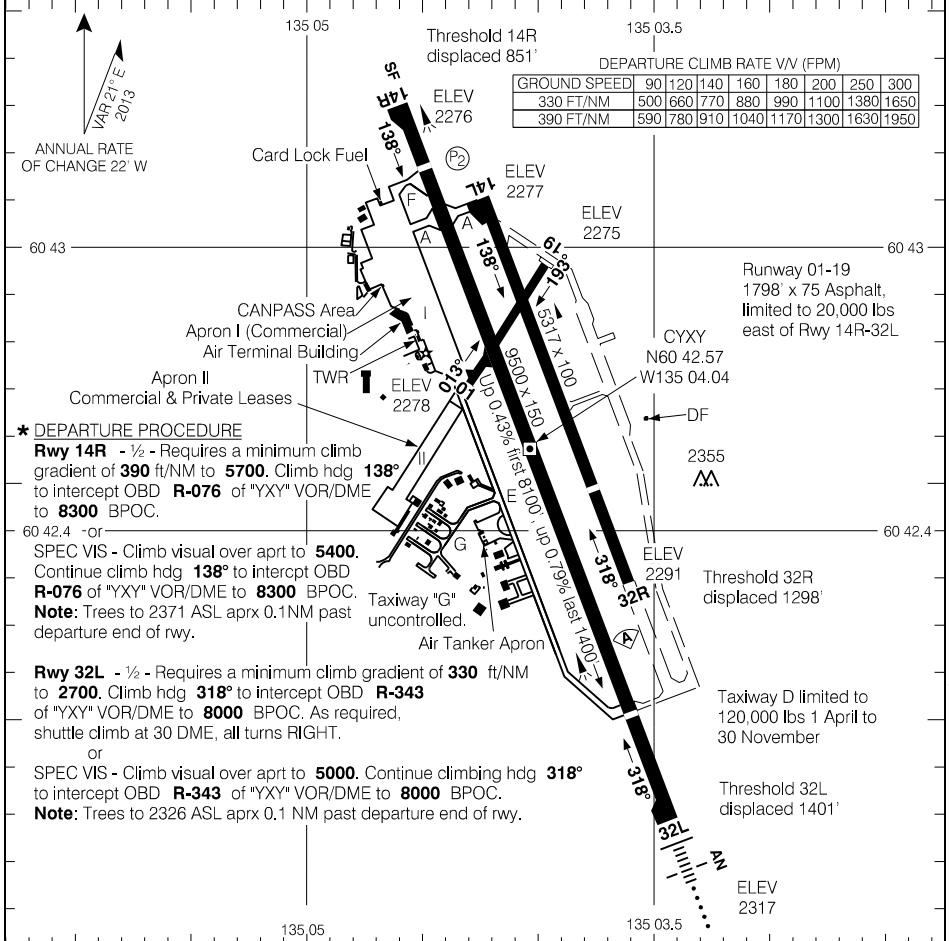


CYXY-AD

WHITEHORSE/ERIK NIELSEN INTL, YT  
CYXY

AERODROME CHART

ATIS - 125.25		GND - 121.9		TWR - 118.3 236.6 RADIO - 118.3		CTR Edmonton - 134.15	
DECL DIST		01	19	14R	32L	14L	32R
TORA	1798	nu	9500	9500	5317	5317	
TODA	1798	nu	10484	10484	6301	6301	
ASDA	1798	nu	9500	9500	5317	5317	
LDA	nu	1798	8649	8099	5317	4019	



Source of Canadian Civil Aeronautical Data: © 2019 NAV CANADA All rights reserved

**\* DEPARTURE PROCEDURE**  
**Rwy 14R** - 1/2 - Requires a minimum climb gradient of **390 ft/NM** to **5700**. Climb hdg **138°** to intercept OBD **R-076** of "YXY" VOR/DME to **8300** BPOC.  
 60 42.4 - or  
 SPEC VIS - Climb visual over aprt to **5400**. Continue climb hdg **138°** to intercept OBD **R-076** of "YXY" VOR/DME to **8300** BPOC.  
**Note:** Trees to 2371 ASL aprx 0.1NM past departure end of rwy.  
**Rwy 32L** - 1/2 - Requires a minimum climb gradient of **330 ft/NM** to **2700**. Climb hdg **318°** to intercept OBD **R-343** of "YXY" VOR/DME to **8000** BPOC. As required, shuttle climb at 30 DME, all turns RIGHT.  
 or  
 SPEC VIS - Climb visual over aprt to **5000**. Continue climbing hdg **318°** to intercept OBD **R-343** of "YXY" VOR/DME to **8000** BPOC.  
**Note:** Trees to 2326 ASL aprx 0.1 NM past departure end of rwy.

RUNWAY LEVEL OF SERVICE	
RVO	LVO
RWY 32L: RVR 1200 RWY 14R: (1/4sm)	NOT AUTHORIZED
TAKE-OFF MINIMA	
Rwys 14R; 32L: ★	
Rwys 14L, 32R, 01, 19: NOT ASSESSED	



AERODROME CHART

EFF 20 JUN 19

CYXY

CYXY-AD