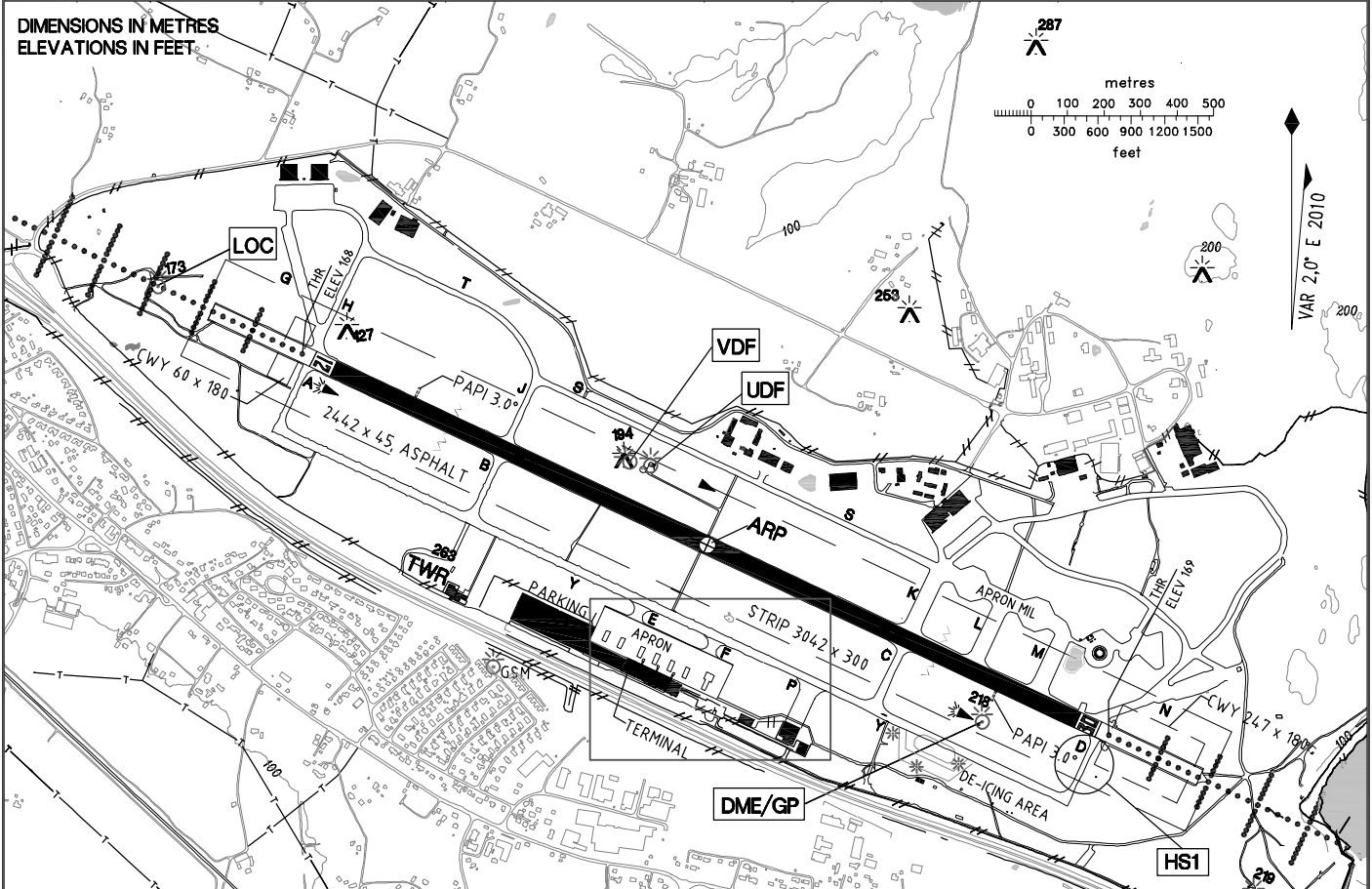


AERODROME CHART	59°22'44"N 010°47'08"E WGS 84	AD ELEV 173 FT	ATIS 136.175 MHz TWR 119.500 MHz	MOSS RYGGE NORWAY
------------------------	-------------------------------------	----------------	-------------------------------------	----------------------------------

RWY	BRG (GEO)	THRESHOLD		BEARING STRENGTH	DECLARED DISTANCES				TWY AND APRON TWY; SEE NOTES ¹⁾ APRON; SEE NOTES ²⁾
					TORA	ASDA	TODA	LDA	
12	116.79°	592301.45 N	0104558.50 E	PCN - 70 F/C/W/T	2442	2442	2689	2442	
30	296.82°	592225.86 N	0104816.57 E	PCN - 70 F/C/W/T	2442	2442	2502	2442	

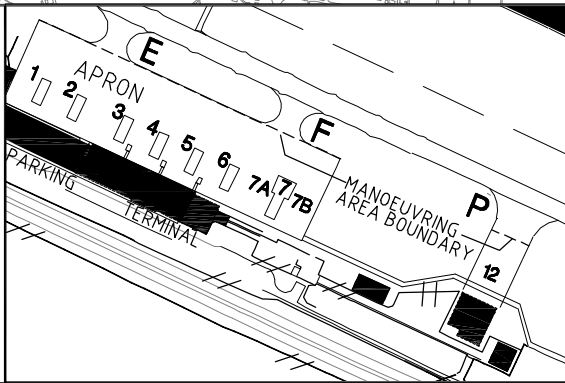


NOTES-REMARKS

1) ALL TWY PCN - 70 F/C/W/T
 TWY A, D WID 23 M CONC
 TWY B, C, G, H, J, N, S, T WID 15 M ASPH
 TWY E, F WID 23 M ASPH
 TWY K, L, M WID 23 M ASPH
 TWY Y WID 22.5 ASPH
 TWY P WID 45 M ASPH

2) APRON CONC/ASPH PCN - 70/F/B/X/T
 HANGAR APRON CONC/ASPH,
 PCN - 70/F/C/W/T
 MIL APRON CONC/ASPH PCN - 85/R/C/W/T
 DE-ICE 46 X 186 M PCN - 70/F/B/X/T
 STAND 1, 2, 3, 4, 5, 6, 7A, 7B, 12 CODE C
 STAND 7 CODE E

3) REDUCED (ALTERNATE) TKOF PSN REF AD 2.13

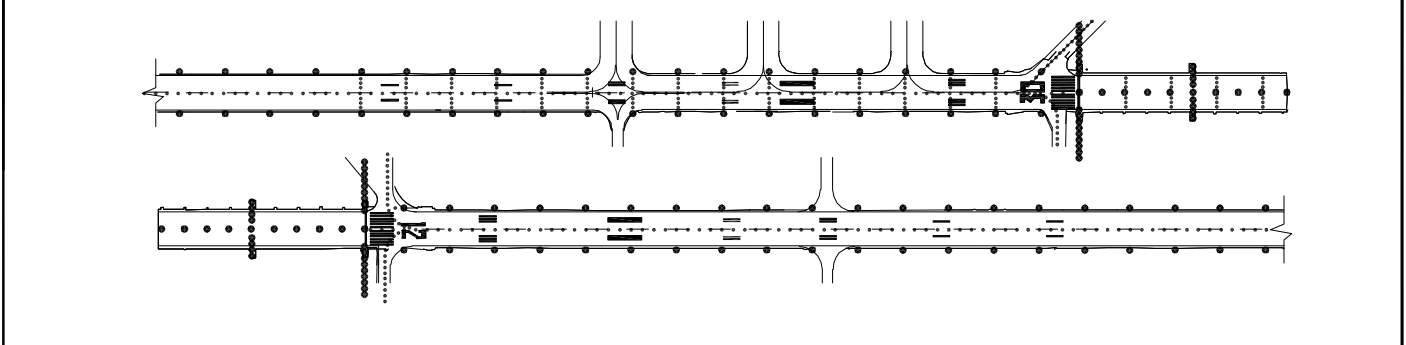


RUNWAY INCURSION HOT SPOTS

HS1

- Holding point RWY 30 is located on TWY Y, short of TWY D.

LIGHTING AND MARKING AIDS RWY 12/30 AND EXIT TWY



RWY	APCH	THR	PAPI	TDZ	RWY CL	EDGE	END
12	W CL/XBAR LIL/H	G LIH	3.0' MEHT 55FT	951M	1542M W / 600M W/R / 300M R	1640M W / 800M Y LIH	R LIH
30	W CL/XBAR LIL/H	G LIH	3.0' MEHT 54FT	951M	1542M W / 600M W/R / 300M R	1640M W / 800M Y LIH	R LIH

CHANGES: HOT SPOT AND EDITORIAL