

AIRPORT DIAGRAM

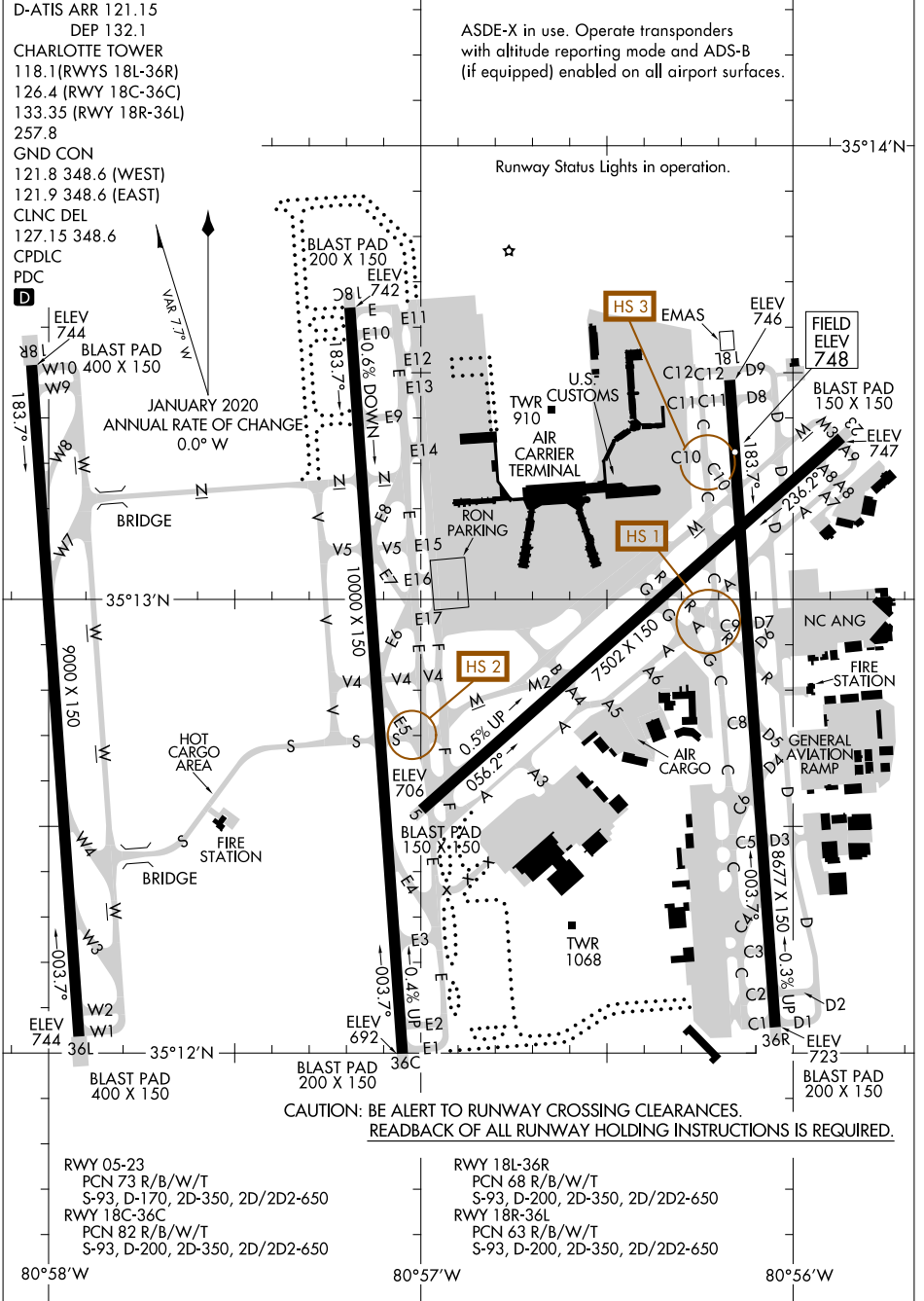
D-ATIS ARR 121.15
 DEP 132.1
 CHARLOTTE TOWER
 118.1 (RWYS 18L-36R)
 126.4 (RWY 18C-36C)
 133.35 (RWY 18R-36L)
 257.8
 GND CON
 121.8 348.6 (WEST)
 121.9 348.6 (EAST)
 CLNC DEL
 127.15 348.6
 CPDLC
 PDC

ASDE-X in use. Operate transponders with altitude reporting mode and ADS-B (if equipped) enabled on all airport surfaces.

Runway Status Lights in operation.

SE-2, 16 MAY 2024 to 13 JUN 2024

SE-2, 16 MAY 2024 to 13 JUN 2024



CAUTION: BE ALERT TO RUNWAY CROSSING CLEARANCES.
 READBACK OF ALL RUNWAY HOLDING INSTRUCTIONS IS REQUIRED.

AIRPORT DIAGRAM