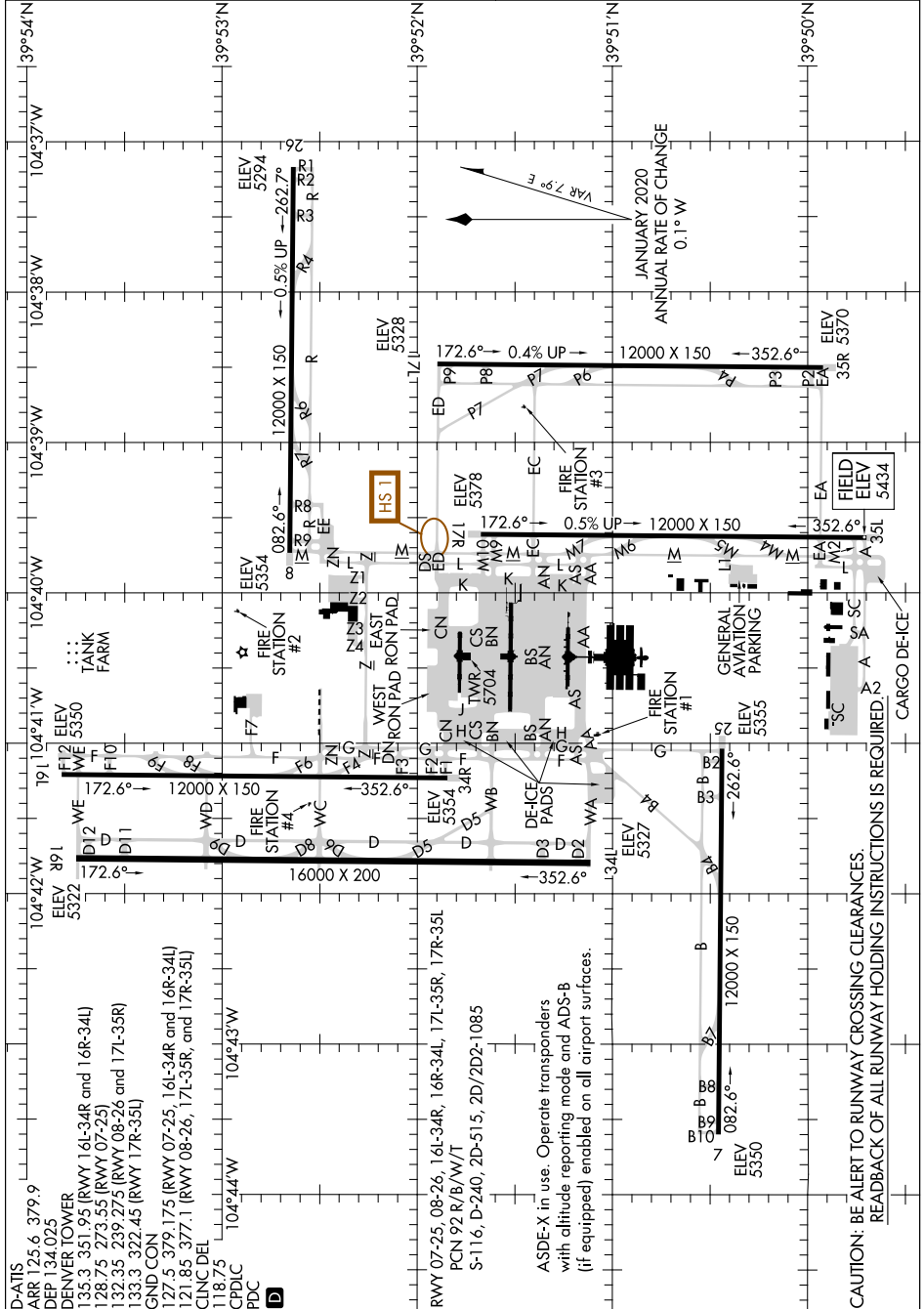


# AIRPORT DIAGRAM

AL-9077 (FAA)

DENVER INTL (DEN)  
DENVER, COLORADO

SW-1, 31 DEC 2020 to 28 JAN 2021



D-ATIS ARR 125.6, 379.9  
 DEP 134.025  
 DENVER TOWER 135.3, 351.95 (RWY 16L-34R and 16R-34L)  
 128.75, 273.55 (RWY 07-25)  
 132.35, 239.275 (RWY 08-26 and 17L-35R)  
 133.3, 322.45 (RWY 17R-35L)  
 GND CON 127.5, 379.175 (RWY 07-25, 16L-34R and 16R-34L)  
 121.85, 377.1 (RWY 08-26, 17L-35R, and 17R-35L)  
 CLNC DEL 118.75  
 CPDLC  
 PDC

RWY 07-25, 08-26, 16L-34R, 16R-34L, 17L-35R, 17R-35L  
 PCN 92R/B/W/T  
 S-116, D-240, 2D-515, 2D/2D2-1085

ASDE-X in use. Operate transponders with altitude reporting mode and ADS-B (if equipped) enabled on all airport surfaces.

CAUTION: BE ALERT TO RUNWAY CROSSING CLEARANCES.  
 READBACK OF ALL RUNWAY HOLDING INSTRUCTIONS IS REQUIRED.

SW-1, 31 DEC 2020 to 28 JAN 2021