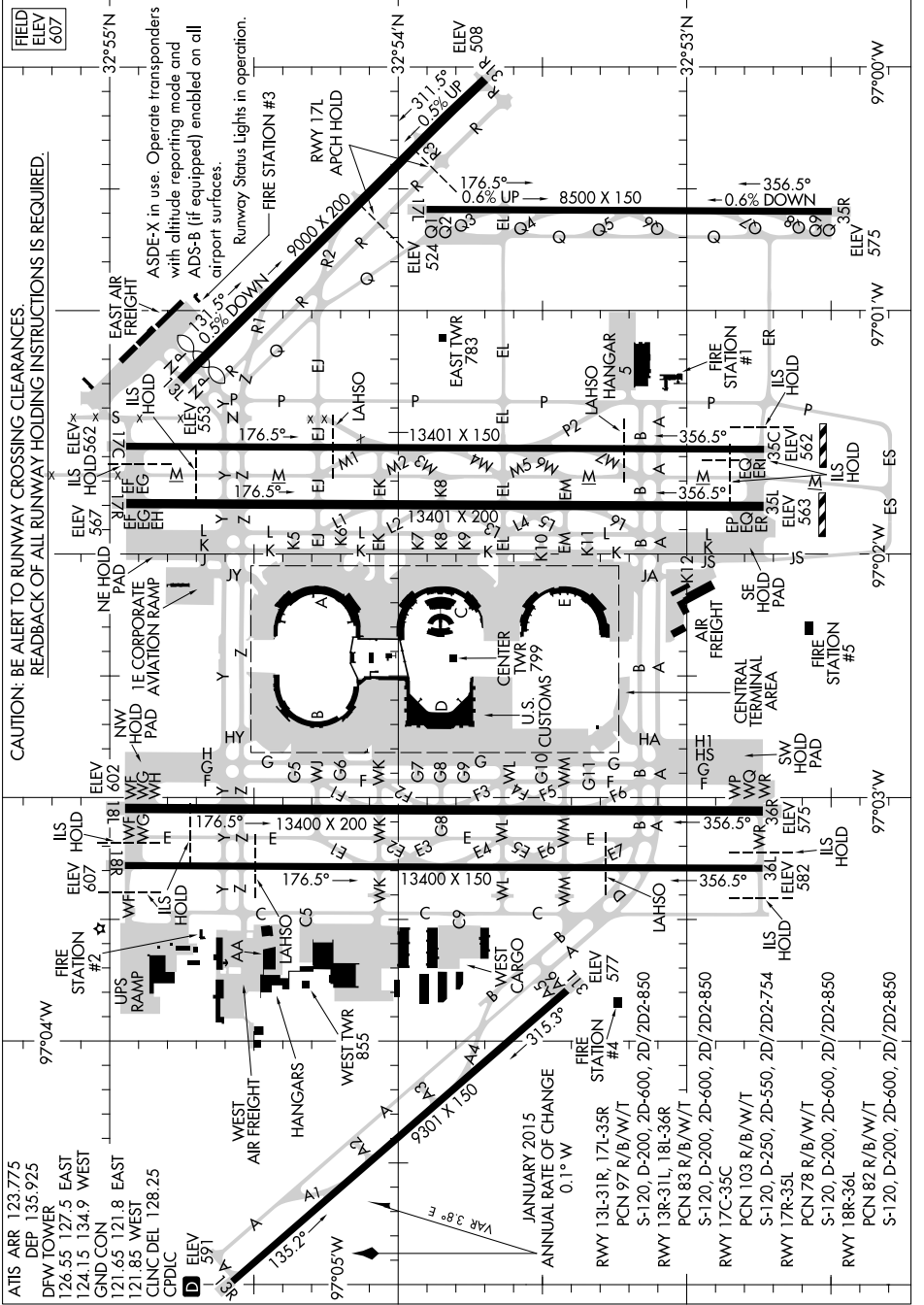


SC-2, 12 SEP 2019 to 10 OCT 2019



SC-2, 12 SEP 2019 to 10 OCT 2019

ATIS ARR 123.775
 DEP 135.925
 DFW TOWER
 126.55 127.5 EAST
 124.15 134.9 WEST
 GND CON
 121.65 121.8 EAST
 121.85 WEST
 CLNC DEL 128.25
 CPDIC
 ELEV 591

JANUARY 2015
 ANNUAL RATE OF CHANGE
 0.1° W
 VAR 3.8° E
 RWY 13L-31R, 17L-35R
 PCN 97 R/B/W/T
 S-120, D-200, 2D-400, 2D/2D2-850
 RWY 13R-31L, 18L-36R
 PCN 83 R/B/W/T
 S-120, D-200, 2D-400, 2D/2D2-850
 RWY 17C-35C
 PCN 103 R/B/W/T
 S-120, D-250, 2D-550, 2D/2D2-754
 RWY 178R/B/W/T
 PCN 78 R/B/W/T
 S-120, D-200, 2D-400, 2D/2D2-850
 RWY 188-36L
 PCN 82 R/B/W/T
 S-120, D-200, 2D-400, 2D/2D2-850