

AIRPORT DIAGRAM

AL-291 (FAA)

NORFOLK INTL (O.R.F)
NORFOLK, VIRGINIA

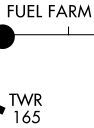
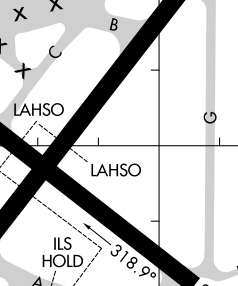
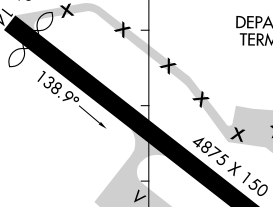
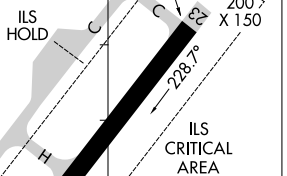
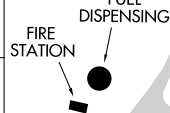
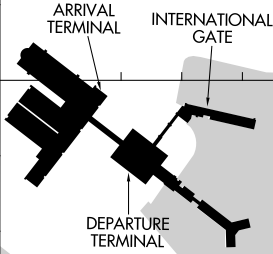
ATIS 127.15
NORFOLK TOWER 120.8 257.8
GND CON 121.9
CLNC DEL 118.5

D

FIELD ELEV 27



JANUARY 2015 ANNUAL RATE OF CHANGE 0.0° W



RWY 05-23
PCN 54 R/B/X/T
S-150, D-200, 2S-175,
2D-350, 2D/2D2-475
RWY 14-32
PCN 19 F/C/X/T
S-75, D-100, 2S-127

CAUTION: BE ALERT TO RUNWAY CROSSING CLEARANCES.
READBACK OF ALL RUNWAY HOLDING INSTRUCTIONS IS REQUIRED.

76°12.5'W

76°12.0'W

76°11.5'W

AIRPORT DIAGRAM

NORFOLK, VIRGINIA
NORFOLK INTL (O.R.F)

NE-3, 02 MAR 2017 to 30 MAR 2017

NE-3, 02 MAR 2017 to 30 MAR 2017