

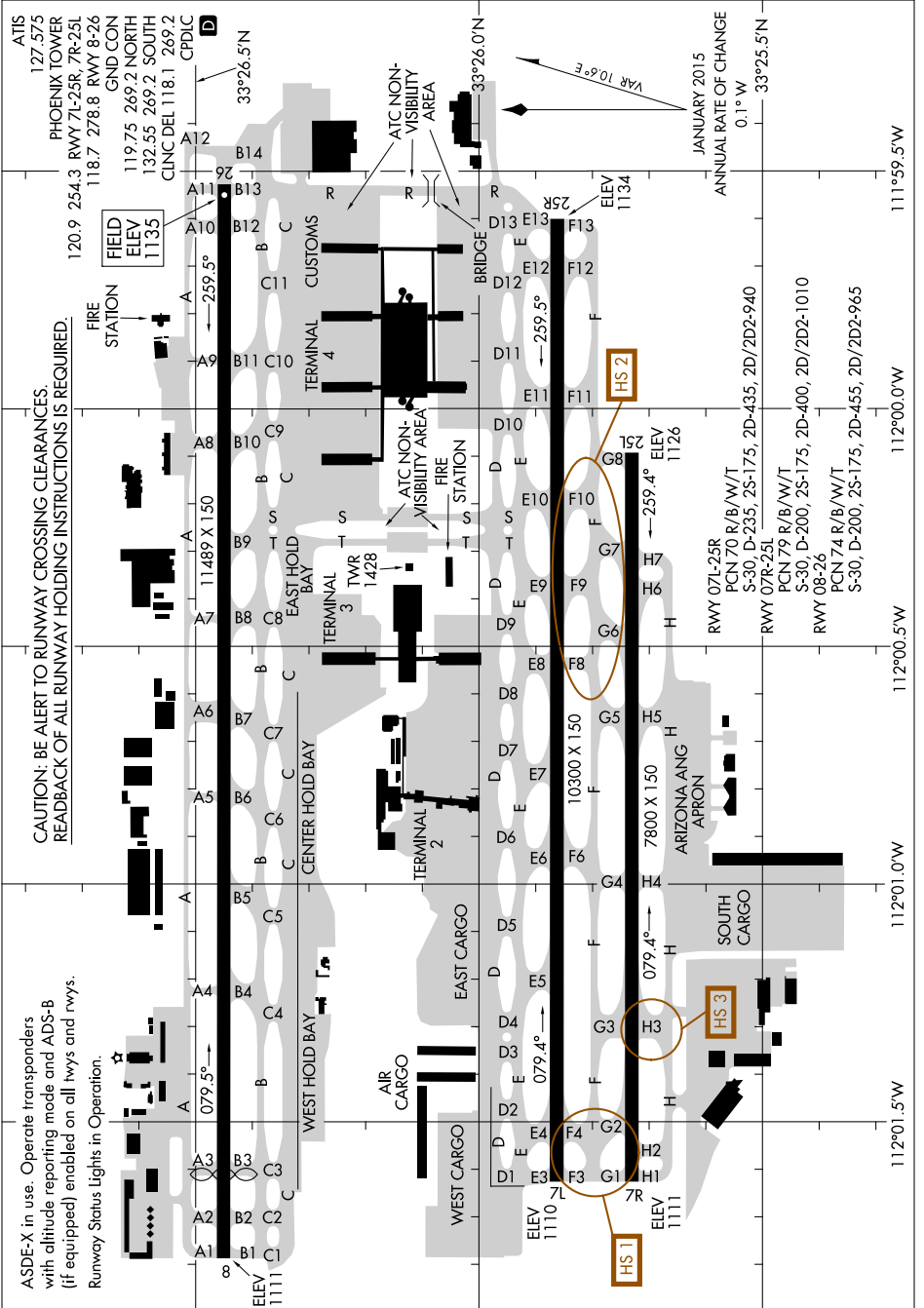
AIRPORT DIAGRAM

AL-322 (FAA)

PHOENIX SKY HARBOR INTL (PHX)

PHOENIX, ARIZONA

SW-4, 02 MAR 2017 to 30 MAR 2017



AIRPORT DIAGRAM

PHOENIX, ARIZONA

PHOENIX SKY HARBOR INTL (PHX)

SW-4, 02 MAR 2017 to 30 MAR 2017

CAUTION: BE ALERT TO RUNWAY CROSSING CLEARANCES. READBACK OF ALL RUNWAY HOLDING INSTRUCTIONS IS REQUIRED.

ASDE-X in use. Operate transponders with altitude reporting mode and ADS-B (if equipped) enabled on all twys and runways. Runway Status Lights in Operation.

RWY 07L-25R
PCN 70 R/B/W/T
S-30, D-235, 2S-175, 2D-435, 2D/2D2-940

RWY 07R-25L
PCN 79 R/B/W/T
S-30, D-200, 2S-175, 2D-400, 2D/2D2-1010

RWY 08-26
PCN 74 R/B/W/T
S-30, D-200, 2S-175, 2D-455, 2D/2D2-965

HS 2

HS 3

HS 1