

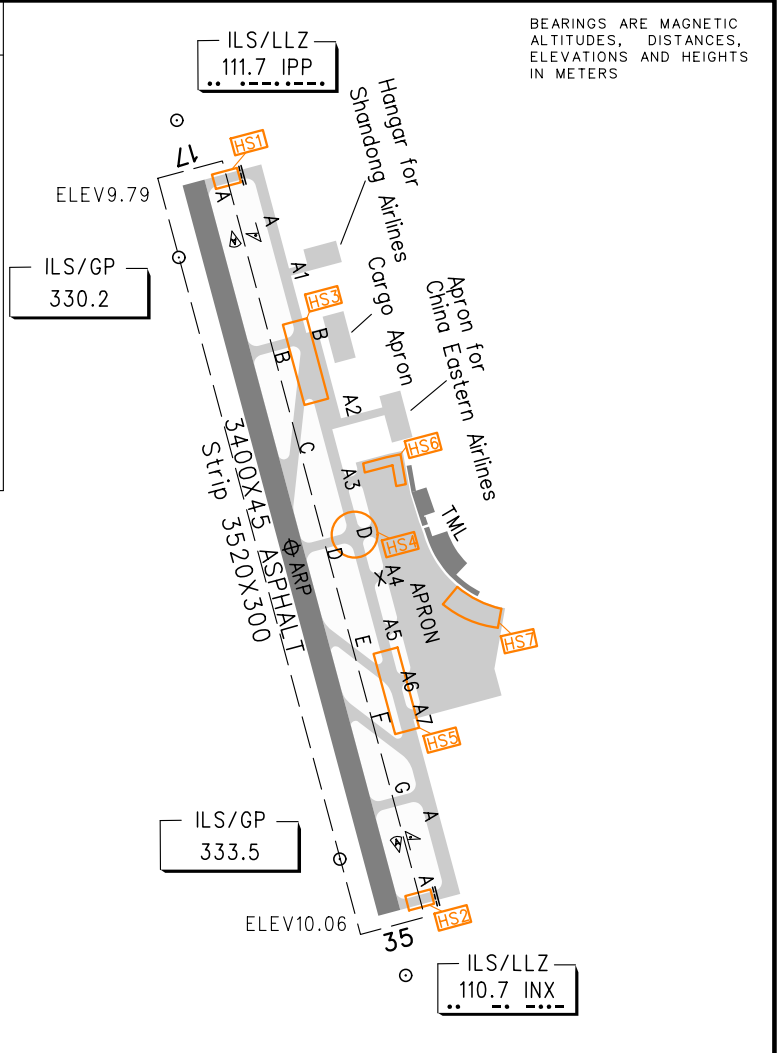
ATIS 127.2
 D-ATIS 131.45
 TWR 118.7(124.3)
 GND 121.65
 121.95 for delivery
 DCL 131.45

ZSQD QINGDAO/Liuting
 N36° 15.9'E120° 22.4' ELEV 10m

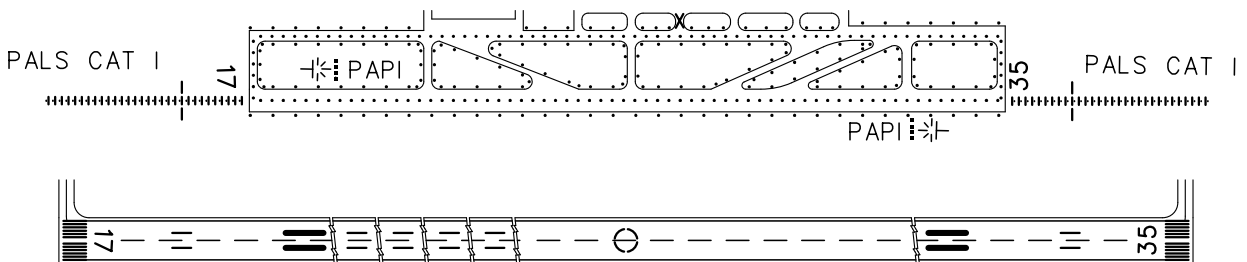
AERODROME CHART

RWY DIRECTION	Bearing strength(PCN)
17	171°
35	351°

Bearing strength(PCN)	
RWY	81/R/B/W/T
A(north and south),B(west of main TWY),D(west of main TWY),G	
TWY C, E, F	77/R/B/W/T
Main TWY A	71/R/B/W/T
TWY A3, A7, B(east of main TWY), D(east of main TWY), Apron(Stands Nr.5-10,21,21A,21B, 23-30,40-45,C1-C4)	70/R/B/W/T
TWYA5, A6, Apron(Stands NR.11-20 and NR.31-39)	56/R/B/W/T
TWY A1, A2	52/R/B/W/T



Note: 1. TWY A4 U/S.
 2. HS1 - HS7: Hot spot.



TAKE-OFF MINIMA(WITH RELIABLE ALTN)(m)				LIGHTS	
RWY17		RWY35		RWY17	RWY35
REDL	NIL(Day only)	REDL	NIL(Day only)		
A				PALS CAT I	PALS CAT I
B	RVR 400	RVR 500	RVR 400	PAPI	PAPI
C	VIS 800	VIS 800	VIS 800	REDL	REDL
D				RCLL	RCLL
				SFL	SFL

Note: TAKE-OFF MINIMA of RWY17 is ceiling 280m, VIS 5km if climbing gradient is less than 4.0%.

Changes: PCN.