

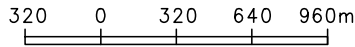
AERODROME CHART

ATIS 127.05
TWR 118.3(118.05)

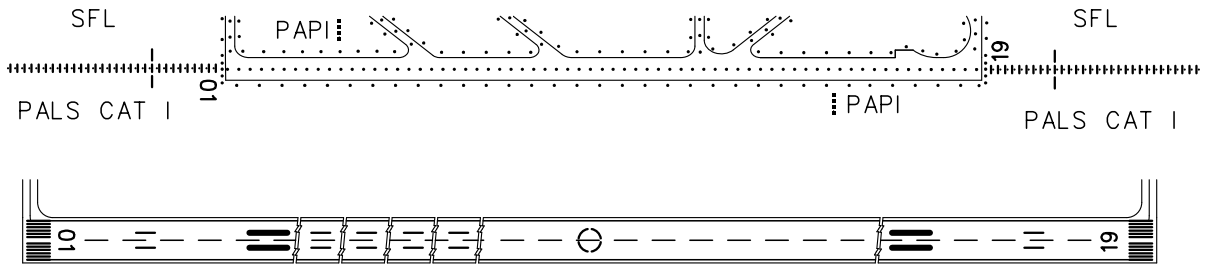
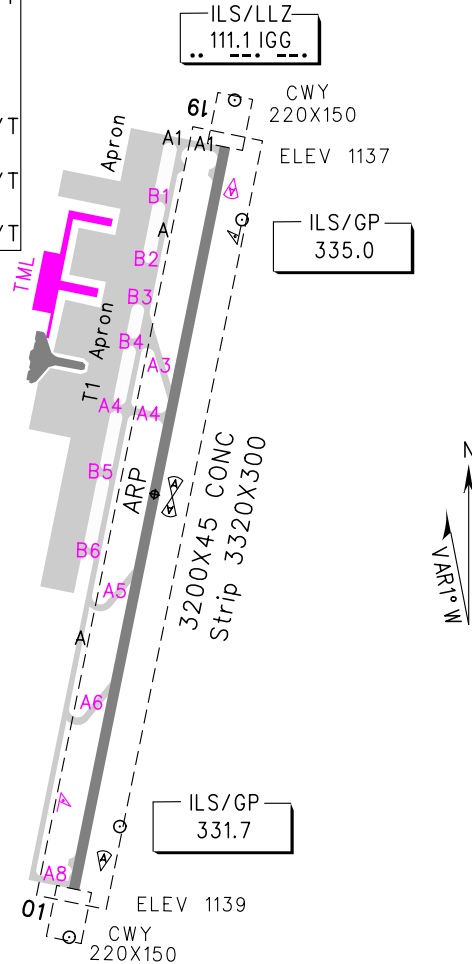
ZUGY GUIYANG/Longdongbao
N26° 32.2'E106° 48.0' ELEV 1139m

RWY	Direction	Bearing strength (PCN)
01	011°	RWY, A, A1, A4, A8, B1-B6, : PCN 71/R/B/W/T B(BTN B1&A4), B(btn 610&613) Stands 101-108, 201-204, 206 304, 306-311, 611, 612, 304A, 304B 306A, 306B, 611A, 611B, 612B, 612B
19	191°	B(BTN 610&B6), Stands 207 : PCN 63/R/B/W/T -209, 301-303, 601-610 B(BTN A4&613), Stands 613 : PCN 59/R/B/W/T -616 A3, A5, A6, Stands 24-27 : PCN 57/R/B/W/T

BEARINGS ARE MAGNETIC
ALTITUDES, DISTANCES,
ELEVATIONS AND HEIGHTS
IN METERS



ILS/LLZ
110.3 10!



TAKE-OFF MINIMA(WITH RELIABLE ALTN)(m)				LIGHTS	
RWY	ACFT Type	REDL	NIL(Day only)	RWY01	RWY19
01/ 19	2 TURB ENG or 3&4 ENG	RVR400	RVR500	PALS CAT I REDL RCLL PAPI SFL	PALS CAT I REDL RCLL PAPI SFL
	Other	VIS1600			
Note: Ceiling more than 100m for 1 ENG aircraft					

Changes: New TML, New apron, PCN, SWY cancelled, RVR equipment and SFC wind sensors location.