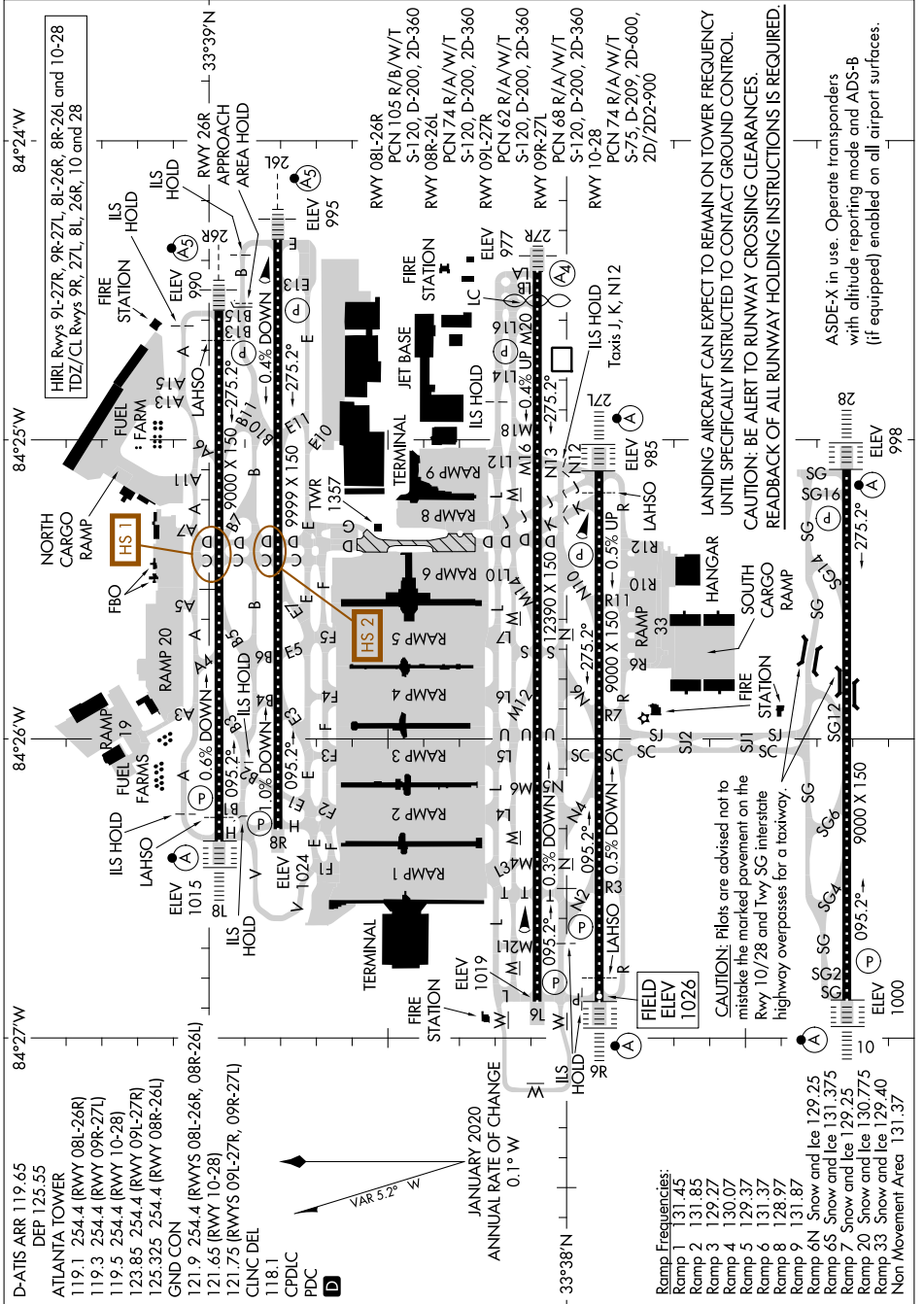


# AIRPORT DIAGRAM

SE-4, 16 MAY 2024 to 13 JUN 2024



**LANDING AIRCRAFT CAN EXPECT TO REMAIN ON TOWER FREQUENCY UNTIL SPECIFICALLY INSTRUCTED TO CONTACT GROUND CONTROL. CAUTION: BE ALERT TO RUNWAY CROSSING CLEARANCES. READBACK OF ALL RUNWAY HOLDING INSTRUCTIONS IS REQUIRED.**

ASDE-X in use. Operate transponders with altitude reporting mode and ADS-B (if equipped) enabled on all airport surfaces.

CAUTION: Pilots are advised not to mistake the marked pavement on the Rwy 10/28 and Twy SG Interstate highway overpasses for a taxiway.

**Ramp Frequencies:**

Ramp 1	131.45
Ramp 2	131.85
Ramp 3	129.27
Ramp 4	130.07
Ramp 5	129.37
Ramp 6	131.37
Ramp 8	128.97
Ramp 9	131.87
Ramp 6N	Snow and Ice 129.25
Ramp 6S	Snow and Ice 131.375
Ramp 7	Snow and Ice 129.25
Ramp 20	Snow and Ice 130.775
Ramp 33	Snow and Ice 129.40
Non-Movement Area	131.37

# AIRPORT DIAGRAM

SE-4, 16 MAY 2024 to 13 JUN 2024